

Garner TOOL NEWS

CORONET MAJOR
EDITION

SENSATIONAL DEVELOPMENT

*New Lathe comprises a
Factory in itself*

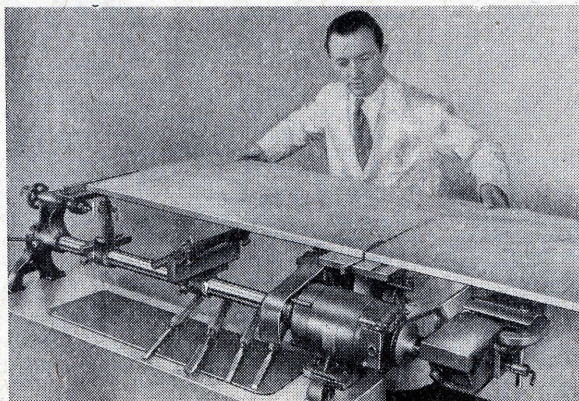
INTERESTING FACTS AND FIGURES

The Coronet "Major" Lathe

Height of Centres	4½"
Length of Bed	48"
Admits between Centres	33"
Speeds (3)	710 ; 1,200 ; 3,000 r.p.m.	
Bed (solid steel bar)	2" diameter
Mandrel (½" × 16 tpi)	1 M.T.
Tailstock	1 M.T.
Hand Rests (2)	9" and 18"
Motor	½ h.p.
Saw Table (rise and fall)	11" × 8"
Depth of Cut	2¼"
Bandsaw (7½" throat)	2" capacity
Cabinet Stand	32"H. × 18"D. × 54"L.	
Compound Slide Rest	90° each way	
Tool Turret	¾" square tools
Planer (rise and fall)	4" max. width
Rebating	½" depth
Sanding Table (tilting)	6" × 8"
Improved Rest Attachment	Turning to 36°	
Flexible Drive Shaft	60" long
Weight	1½ cwts.

PANEL CUTTING ON THE MAJOR

This shot clearly shows the adjustable Table complete with Fence and the new improved Tilting Table. Note particularly the Planer and Saw Table "ganged up" at the same time.



FOR more than two years the manufacturers of this splendid new lathe have been developing the features which go to make it the complete answer to every woodworker's ambition. Every single feature has been suggested from the experience of master craftsmen, some ideas were ruthlessly discarded, others adopted after exhaustive tests.

Above all else the machine is PRACTICAL, every device contributes a "free-from-fuss" operation and brings factory capacity within the range of the humblest workshop. How much care and forethought has been expended in bringing this new lathe to perfection you can assess from the following pages. The result is a tribute to British craftsmanship which embraces all these operations on one machine:

Wood and Metal Turning—Circular Sawing—Band Sawing—Belt Sanding—Disc Sarding—Buffing and Polishing—Grinding and Tool Sharpening—Metal Spinning—Panel Cutting—Side and End Mortising.

Everything is driven by one self-contained electric motor which also provides motive power for Flexible Drive Equipment, an additional feature suggesting many useful applications. All operations are carried out at CORRECT SPEEDS.

Every craftsman MUST consider this step forward NOW.

OPINIONS

"My MAJOR Woodworking Lathe is the envy of the British Colony here. Planer arrived yesterday and has already done excellent service."

(R.J.P., Argentina)

"For an outlay of 50/- per month I have achieved the dream of a lifetime—my lathe is 100 per cent and your H.P. scheme an unobtrusive blessing." *(Name and address withheld)*

"Please rush Coronet Bandsaw by first steamer. Lathe and allied equipment arrived in perfect condition and I am delighted." *(C.T.J., Pakistan)*

"Your Coronet MAJOR Lathe is the equivalent of two extra hands in my small shop for a nominal sum each week. Thanks indeed."

(Name and address withheld)

CORONET C.M.504 BANDSAW

7½" throat. 2" capacity.
Available as separate machine complete with Belt, Blade and Driving Pulley.

£16 - 10 - 0

Or 90/- deposit and 12 monthly payments of 23/4.

T. GARNER & SON, LTD.
Redbrook Works, Gawber
BARNESLEY
Phone 2908

TAILPIECE: Discerning craftsmen will readily appreciate the facilities offered by our PERSONAL HIRE PURCHASE PLAN. Please turn to page 4.

INTRODUCING CORONET DESIGNER

Answering the Questions YOU would ask



Mr. Charles Parker.

In an earnest endeavour to give the most factual picture we recorded this interview with Mr. Charles Parker, who is responsible for the design and manufacture of the Coronet MAJOR Woodworking Lathe.

The most unusual feature of the MAJOR Lathe is the Swivelling Headstock, which is really exclusive. Can you outline its advantages?

The Headstock has parallel and conical bearings with rear ball thrust lubricated by drip feed. Three speeds (figures 710, 1,200 and 3,000) are given covering all operations, the heavy duty mandrel is screwed $\frac{7}{8}$ " x 16 tpi on nose and bored No. 1 M.T. to take centres, drill chuck, etc. The whole unit can be swivelled to any angle whilst Circular Saw or Planer are in use, allowing for turning of large diameters up to 36" normally made impossible by limitations of centre height. Return to zero position is immediate as location marks are provided.

And the Tailstock?

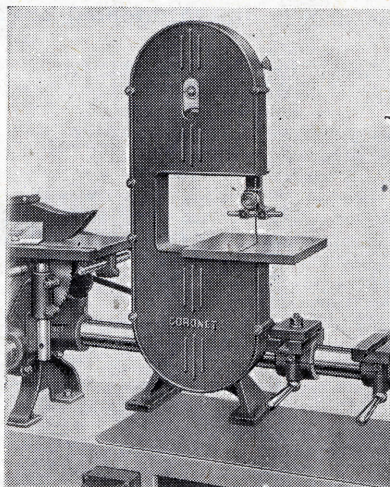
A fully screwed adjustable sliding barrel bored No. 1 M.T., and self-ejecting. The tailstock locking handle is of robust proportions (these handles fitted universally dispense with the necessity of spanners) and has an interesting new feature. All oft-used tension points eventually wear slack; this is taken care of in a moment, a handy grub screw instantly restores adjustment. The bed is furnished with both double (18") and single (9") hand rests.

Everything works from one Motor?

Yes, a double spindle BROOK $\frac{1}{2}$ h.p. motor operates the lathe and all attachments. An important feature is that a battery of three attachments may be kept mounted at the same time.

Do you make much use of light alloys in construction?

After careful thought we have avoided alum and alloy castings in the main structure, these being unsuitable for any part calling for accuracy and rigidity.



THE CIRCULAR SAW ATTACHMENT AND THE NEW BANDSAW IN POSITION. This latter may also be purchased as an independent unit complete with Belt and Pulley.

May we have a quick run through the list of attachments?

Every attachment is designed to give full-scale production on the lathe, the Bandsaw, Belt Sander and Planer can also be supplied as independent units.

The Circular Saw Table has rise and fall movement and is fitted with R.H. and L.H. fences enabling extra long work to be undertaken. With this attachment really adequate lengths can be tackled without fouling other parts of the lathe. Simply release the Hand Rest and Tailstock levers and these units drop back out of the way; the operation finished, they can be immediately returned to position, thanks to their automatic plunger location.

Is the Bandsaw of orthodox design?

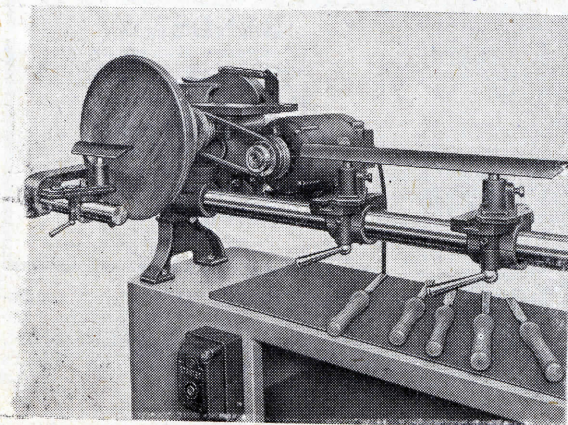
Yes, full scale and will tackle wood, plastics or metals with the correct blade. The drive (swivel headstock and replace faceplate with special pulley) is totally enclosed via balanced rubberised wheels with spring tension adjustment and screw adjusted tracking device.

Is the Planer driven in the same way?

No, direct drive from the motor. It has a 2 $\frac{1}{2}$ " cutter head with two high carbon blades and runs on ball bearings. The table accommodates 18" lengths of up to 4" width. It is fully adjustable for depth of cut and rebating to $\frac{1}{2}$ ". Rise and fall guard is provided. Incidentally the Belt Sanding Attachment has the same driving method as the Bandsaw and carries a 4" Garnet Belt.

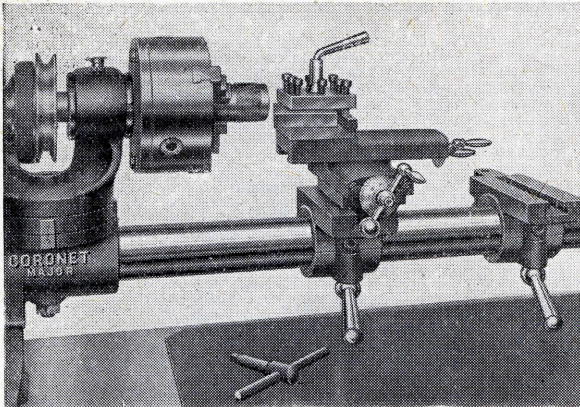
How about Mortising?

The Mortising Attachment is located on the tool rest saddle and a generously proportioned lever gives a smooth, effortless stroke. The drill bit is attached via a special chuck to the mandrel nose, the hollow chisel has its own support from the lathe bed. A stop allows for end mortising to pre-determined depth and the length of the work accommodated is only restricted by the width of the workshop. Side mortising on differing lengths is made easy by simple table adjustment and a

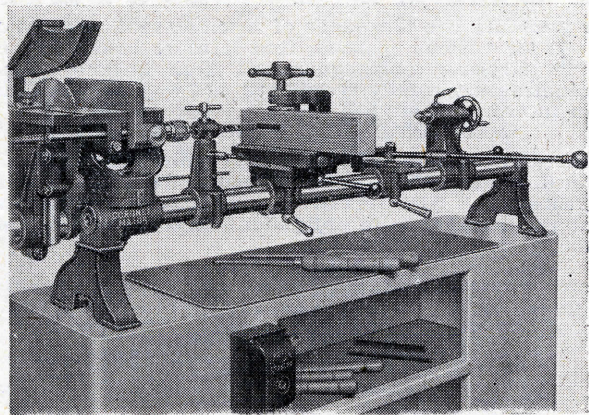


THE LARGE TURNING REST ATTACHMENT WITH HEADSTOCK SWIVELLED

for turning to over 24" diameter. N.B. The large and main end of the Spindle is used giving maximum strength and rigidity.



The Compound Slide with Tool Turret in position for metal turning.



Cabinet Stand Assembly with Circular Saw and Mortising Attachment in position.

quick release handle is standard equipment. Another practical application suggests itself—an efficient jig for quick, sensitive drilling with a rapid lever motion.

Cutting up is always a problem in the small shop. Any ideas?

The new Panel Support provides support for cutting panels to any length and repetition to fixed dimensions is easily achieved. Cutting down to working size of large panels up to 48" long is equally simple, entailing only removal of the panel fence. Adjustment for height is common with the Saw Table.

Can you give us an example?

Yes, cut one inch off a six foot plank in a seven foot workshop. Look carefully at the illustration (page 1) and consider how the space normally occupied by the lathe is being utilised.

The Flexible Shaft Drive is a new departure.

One of the most versatile attachments which readily brings to mind a thousand-and-one useful applications—grinding, polishing, sawing, de-

carbonising, drilling and wire brush work. The swivel headstock plus the 60" length of shaft makes available a versatile flexible shaft drive polishing machine that would otherwise entail buying a separate unit.

How about Metal Turning?

The Compound Slide Rest is fully compound with graduated index dials to give 90 degree angle in each direction. The fitted Four Tool Turret takes $\frac{3}{8}$ " square slide rest tools or bits. A full range of suitable Lathe Chucks is readily available.

The Cabinet Stand is very handsome.

Its purchase is not essential, but does make the whole unit self-contained and gives valuable shelf space. Push Button Starter Switch for the motor is mounted conveniently to hand.

Any comments on the smaller accessories?

No, they are mainly self explanatory, except to emphasise the value of the Improved Rest Attachment. Having swivelled the lathe headstock to the front position, attach rest to tapped hole and the way is open for turning diameters up to 36".

For a Modest Outlay

The HOME CABINET MAKER

Super Universal Lathe and Combination Woodworking Machine.

3 $\frac{3}{8}$ " centre height.

19", 24" or 30" between centres.

FOR the craftsman with a modest purse or where an auxiliary machine is required, this splendid Lathe will meet all demands. Full range of auxiliary equipment available.

From £8-17-0

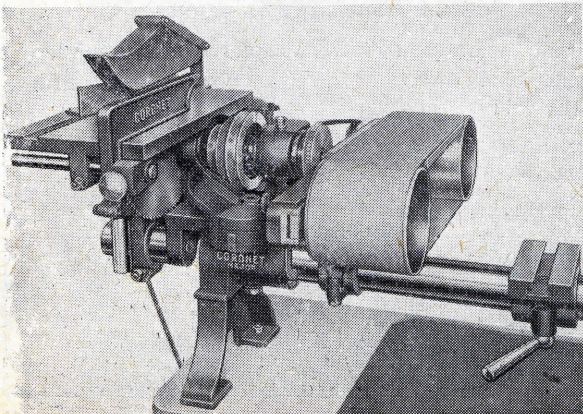
Details gladly on request.

T. GARNER & SON, LTD.

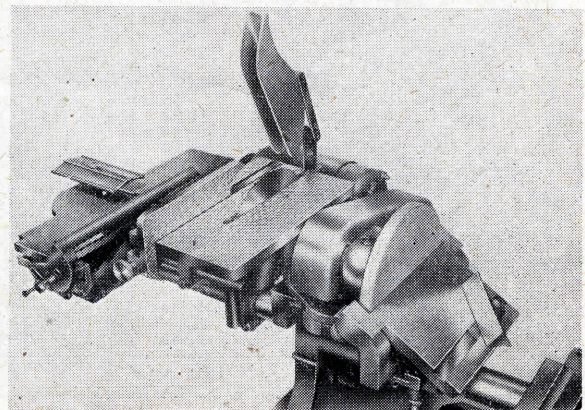
Hand and Machine Tool Division
Redbrook Works, Gawber
BARNESLEY

Phone 2908

The Circular Saw and Belt Sander mounted ready for use.



An interesting shot showing the Planer, Circular Saw and Disc Sander with Tilting Table all mounted at one time.



PURELY PERSONAL

THERE are thousands of machine tool users who, for various reasons, find it more convenient to purchase their equipment from income. This requirement is fully recognised and was instrumental in introducing our

PERSONAL HIRE PURCHASE PLAN

No two customers have the same requirements and it is for this reason that we seek to furnish **CONFIDENTIAL PERSONAL QUOTATIONS** against your detailed list of requirements—no obligation, of course. Do post the coupon **TO-DAY**.

PRICE LIST

Qty.	Description	£	s.	d.
6419/RO.	CM500 LATHE, complete with Back and Prong Centres, large Faceplate, Long and Short Rests, Washers for mounting Grinding Wheel. All complete and ready for bolting to Bench	£29	0	0
6428/RO.	CM505 CABINET STAND, All Steel, complete with Shelves and Push Button Starter	£15	0	0
6420/RO.	CM501 MOTOR complete, 1/2 h.p., double ended Spindle, 200-210/1/50 A.C., self-contained Platform, matched Pulley and Belt	£9	16	0
6421/RO.	As 6420/RO but 220-230/1/50 A.C.	£9	16	0
6422/RO.	As 6420/RO but 240-250/1/50 A.C.	£9	16	0
PRECISION S.C. DRILL CHUCKS WITH KEY				
6047/1330	0-1/4" capacity	£1	5	0
6049/278	No. 1 M.T. Arbor for 6047/1330	3	4	0
6050/623	0-1/4" capacity	£1	7	6
6051/624	No. 1 M.T. Arbor for 6050/623	4	3	0
6053/1331	0-3/8" capacity	£1	9	0
6054/172	No. 1 M.T. Arbor for 6053/1331	4	0	0
6056/1333	5/64" - 1/2" capacity	£1	11	6
6057/460	No. 1 M.T. Arbor for 6056/1333	4	0	0
6059/1066	0-1/2" capacity	£1	16	6
6060/317	No. 1 M.T. Arbor for 6059/1066	3	4	0
6062/595	0-1/2" capacity	£2	3	0
6060/317	No. 1 M.T. Arbor for 6062/595	4	7	0
LATHE CHUCKS				
5900/36.	BURNERD 2 3/4" x 3 jaw Geared Scroll Lathe Chuck, less backplate	£5	7	10
6443.	BURNERD 2 3/4" x 3 jaw Geared Scroll Lathe Chuck, fitted backplate	£7	0	10
5902/50.	BURNERD 3 1/4" x 3 jaw Geared Scroll Lathe Chuck, less backplate	£5	12	2
6444.	BURNERD 3 1/4" x 3 jaw Geared Scroll Lathe Chuck, fitted backplate	£7	5	2
5916/30.	BURNERD. 3" x 3 jaw Lever Scroll Lathe Chuck, less backplate	£3	19	2
6445.	BURNERD 3" x 3 jaw Lever Scroll Lathe Chuck, fitted backplate	£5	12	2
5918/48.	BURNERD 4" x 3 jaw Lever Scroll Lathe Chuck, less backplate	£5	18	10
6446.	BURNERD 4" x 3 jaw Lever Scroll Lathe Chuck, fitted backplate	£7	11	10
5924/52.	BURNERD 3 1/2" x 3 jaw Independent Lathe Chuck, less backplate	£2	9	6
6447.	BURNERD 3 1/2" x 4 jaw Independent Lathe Chuck, fitted backplate	£4	2	6
5926/53.	BURNERD 4" x 4 jaw Independent Lathe Chuck, less backplate	£2	11	5
6448.	BURNERD 4" x 4 jaw Independent Lathe Chuck, fitted backplate	£4	4	5
5928/54.	BURNERD 4 1/2" x 4 jaw Independent Lathe Chuck, less backplate	£3	1	4
6449.	BURNERD 4 1/2" x 4 jaw Independent Lathe Chuck, fitted backplate	£4	14	4
6450/RO.	CM521 Screwed Backplate, 4" General Purpose	£1	0	0
GENERAL ATTACHMENTS AND ACCESSORIES				
6423/RO.	CM502 Circular Saw Attachment complete with Right Hand and Left Hand Fences, Mitre Fence and 8" Saw Blade	£8	16	0

Carried Forward £

Qty.	Description	£	s.	d.
	<i>Bt. Forward</i>			
	6424/RO. CM503 Belt Sanding Attachment complete with 4" Garnet Belt, Pulley and Driving Belt	£8	16	0
	6425/RO. As 6424/RO but for use as independent machine (LESS MOTOR)	£8	16	0
	6426/RO. CM504 Bandsaw Attachment complete with Blade, Driving Pulley and Belt	£16	10	0
	6427/RO. As 6424/RO but for use as independent machine (LESS MOTOR)	£16	10	0
	6429/RO. CM506 Heavy Compound Slide complete with Four Tool Turret	£8	0	0
	5817/1196. Set (12) H.S. Slide Rest Tools, 3/8" square	£3	19	0
	5819/1218. Set (6) Handle Tools for Metal	19	3	0
	5820/1216. Set (3) Handle Tools for Wood	13	9	0
	6430/RO. CM507 4" Wood Planing Attachment complete with Belt and Pulley	£13	10	0
	6431/RO. As 6430/RO but for use as independent machine (LESS MOTOR)	£13	10	0
	6451/RO. CM520 Improved Tilting Table complete with CM508 Sanding Plate, Adjustable Mitre Fence and Saddle mounting	£8	10	0
	6432/RO. CM508 8" diameter Disc Sanding Plate	£1	0	0
	6164/1272. Extra Sanding Discs, coarse	each	1	2
	6165/1270. Extra Sanding Discs, medium	each	11	
	6166/1271. Extra Sanding Discs, fine	each	10	
	6157/1192. Cement for Sanding Discs (approximately 1 lb.)	3	0	
	6150/962. Plain Lathe Centre (soft), No. 1 M.T.	3	10	
	6151/963. Plain Lathe Centre (hard), No. 1 M.T.	3	10	
	6152/1016. Half Centre, No. 1 M.T.	6	0	
	6153/1018. Wood Prong Centre, No. 1 M.T.	8	3	
	6154/1020. Hollow Centre, No. 1 M.T.	3	9	
	6155/1015. Tailstock Cup Centre	5	0	
	6433/RO. CM509 Special Improved Rest Attachment for Large Faceplate work	£2	10	0
	6434/RO. CM410 Mortising Attachment for Side and End Mortising complete with one Hollow Chisel and Bit	£15	0	0
	6435/RO. CM511 Wood Screw type Chuck for disc work	9	0	
	6436/RO. CM512 Screw-on Adaptor for Grinding Wheel with Washers and Nut	12	0	
	6437/RO. CM513 Flexible Drive Shaft complete with Driving Adaptor, 3/8" Drill Chuck, Washers and Nut for Grinding Wheel	£8	10	0
	6438/RO. CM514 Polishing Mop Adaptor	10	0	
	6141/1227. Polishing Mop	18	0	
	6439/RO. CM515 Main Belt Guard	17	6	
	6440/RO. CM516 Underside Saw Guard	12	6	
	6441/RO. CM518 Two Jaw Adjustable Steady for long and slender work	£1	12	6
	6442/RO. CM519 Adjustable Table complete with Fence for repetition Panel Cutting	£2	10	0
	6168/F. Book: Woodturning for the Beginner (Macbeth)	3	6	
	TOTAL	£		

To: T. GARNER & SON LTD.
Hand and Machine Tool Division
REDBROOK WORKS, Gawber, BARNSELY

Please supply:

(A) CURRENT CASH QUOTATION FOR ITEMS ENUMERATED ABOVE.

(B) PERSONAL HIRE PURCHASE QUOTATION (MINIMUM ORDER £10) FOR ITEMS ENUMERATED ABOVE.
(Strike out which does not apply)

NAME (Block Capitals).....

ADDRESS

TOWN..... COUNTY.....

COUNTRY (Overseas Orders Only).....

T. GARNER & SON LTD

HAND & MACHINE TOOL DIVISION

Redbrook Wks Gawber, Barnsley

PHONE 2008 P.B.E. CREAMS - 18/10/58 2008 FARNLEY ST